



LYRAVOX

HAMBURG

THE CULTURE OF SOUND



THE LYRAVOX® STEREO MASTER SM2



LVRVOX

STEREOMASTER SM2-200 mkII INTERIOR WHITE (MATTE) / GRAPHITE STEEL



STEREOMASTER SM2-170 mkII in BLACK / MAKASSAR PIANO FINISH

THE STEREOMASTER CONCEPT: HIGH END AUDIO, RE-FORMED

Heavy audio equipment is no longer compatible with contemporary lifestyles or neat interiors. This is tragic, as today's prime audio equipment provides listening pleasure like never before. It is Lyravox' mission to transform modern high end audio technology into user-friendly as well as interior-friendly solutions. The result is the Lyravox Stereomaster series of totally integrated, unicabinet audio systems.

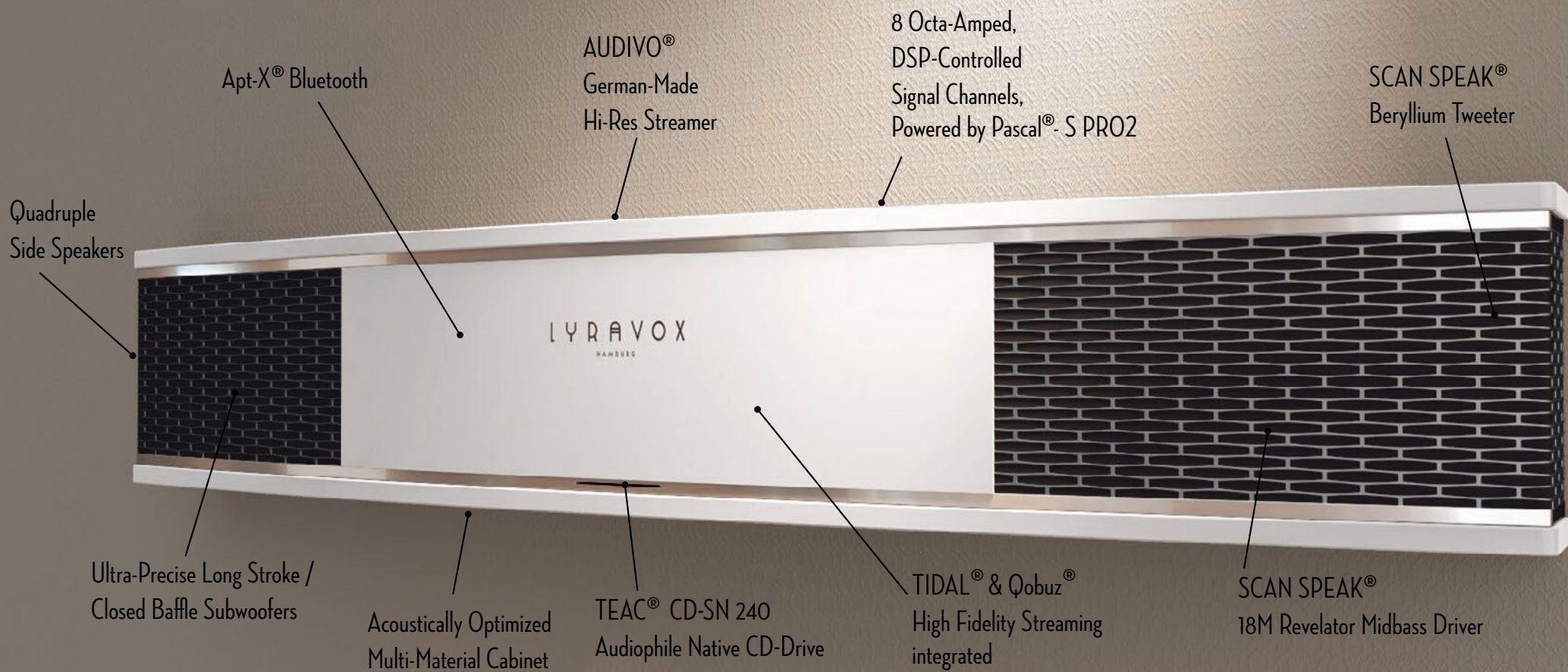
Primarily and regardless of their size, all Stereomasters are no-compromise high end audio generators. Employing audio components of the highest grade, matching them perfectly, and forging them to one lossless audio chain is the basis of the concept - an approach that is not possible within traditional audio systems. In addition, the Stereomasters incorporate newly developed acoustic and digital sound projection techniques - for a stereo image that is highly defined while being less dependent on positioning within the room.

Offering all modern music sources and full digital connectivity, a Stereomaster remains the only piece of audio equipment necessary for full scale music replay. Sources include CD, USB storage, home network sources via DLNA (music servers, NASes, PCs), internet radio, cd-quality internet streaming on demand via TIDAL® or Qobuz®,

Bluetooth AptX®, digital external inputs, and analog external inputs. All common audio formats are supported, up to a resolution of 24 bit/192 khz (two times recording studio standard). Stereomasters integrate into home networks via LAN or WLAN, and they are compatible with most home automation systems. Multiroom setups of several Stereomasters or their integration into mixed environments are possible.

Regardless of their performance and feature richness, the Lyravox Stereomasters are just as easy to use as a TV set or an audio 'gadget'. The key to this is the Lyravox RF remote control with colour display, allowing instant intuitive control of all functions. Alternatively or in parallel, the Lyravox Remote app for iOS® or Android® can be used on smartphones or tablets for controlling a single Stereomaster or a group of units.

As the icing on the cake, Lyravox Stereomasters are not only meant to fit into contemporary interiors, but to complement them favourably. Lyravox offers a wide range of finishes and colour combinations for all Stereomasters, as well as unlimited individual finishes within the Custom Craft program. This is possible because all Stereomasters are individually handcrafted in Hamburg, Germany.



ACOUSTIC MASTERPIECE

The new SM2-200 mkII is Lyravox' flagship Stereomaster. Measuring 200 x 33 x 25 cm (WxHxD), it is equipped with superlative speaker drivers. These include the world's longest stroke 8" high end woofer (in closed baffle configuration), the legendary Scan Speak® 18M, known as the world's best human voice renderer, and the all new Scan Speak® beryllium tweeter (which we consider a class of its own). The SM2-200 mkII is an octa-amped digital/active design with eight internal audio channels and DSP-based crossover/equalisation/time alignment. Its side speakers serve to create a panoramic stereo image, restore a natural sonic diffuse field, and provide an undiminished 180° stereo listening area. The Stereomaster SM2-200 mkII is designed to deliver concert level audio replay in rooms up to 80m²; the more compact SM2-170 mkII can serve rooms up to 50m². The SM2s compete with today's leading high end audio systems in every aspect of sound quality.



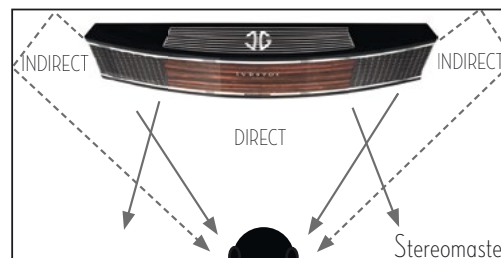
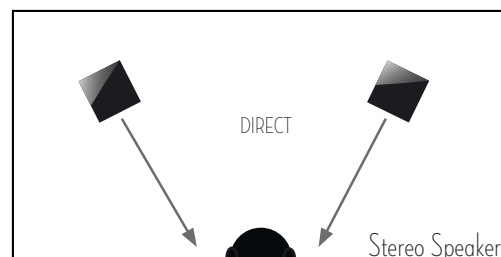
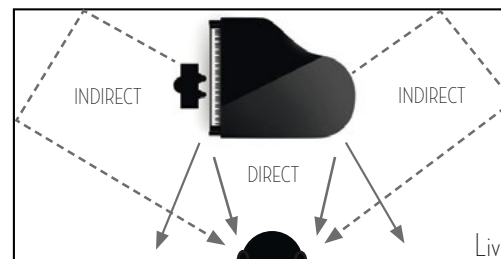
SOUND QUALITY REDEFINED

In the understanding of Lyravox, high end audio today demands much more than ultra clear sound, wide frequency extension, sonic linearity and powerful dynamics. The distinction between sophisticated audio and audiophile greatness lies in criteria such as musical homogeneity, timing, articulation, colour, micro dynamics, textural richness, depth, holographic imaging, and air. These are the aspects that transform recorded music into sensations, and the aspects that all Stereomaster models are optimized for. Decisive for these qualities is the individual performance as well as the interaction of speakers, amps, crossover, and cabinet - the focus points of the development of the Stereomaster range. Thanks to their total integration and the employment of the most advanced hard- and software available today, Stereomasters enjoy certain technical advantages in comparison to traditional HiFi-setups:

- A Stereomaster, being a holistic system, comes without sonic bottlenecks such as interconnect cabling, plugs, interfaces, conversion stages, and, most of all, passive crossovers as the main obstacle for perfect acoustics.
- As they were carefully selected to work as a team, all components within the Stereomaster are fully matched to form a ‚perfect audio chain‘.
- The digital speaker management of the Stereomaster allows time alignment by micro seconds, as well as advanced filtering and equalisation, thus creating the most homogenous sound possible from a multiple driver system.

LIFELIKE , THREE - DIMENSIONAL SOUND - THROUGHOUT THE ROOM

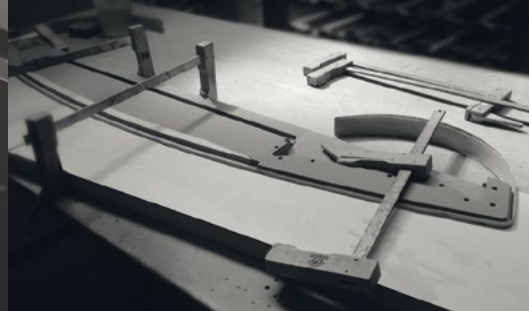
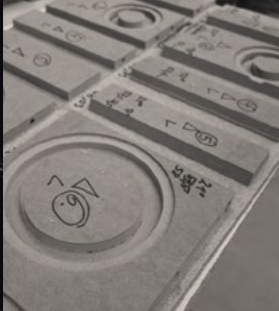
In contrast to any other audio system, a Stereomaster is an acoustic projector, using multiple audio channels to recreate the sonic dispersion of a live performance. Auxiliary side drivers re-create the diffuse field of a live musical performance (see graphic illustration). Another advantage of the Stereomaster's multi-channel projection is a stable stereo perception within 180° in front of the unit. Room related sound adjustments will be carried out by Lyravox trained dealer personnel.



Acoustic diffuse field in comparison



STEREOMASTER SM2-170 mkII in
BLACK PIANO FINISH



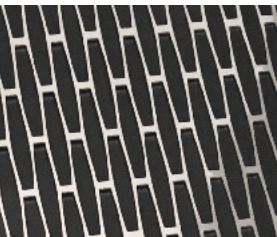
DESIGN & CRAFT

The appearance of the Stereomaster SM2 is on par with its technical and musical brilliance: Scandinavian design meets German master craftsmanship. All Stereomasters are individually handcrafted in Hamburg, using finest veneers, a variety of unicolor finishes from ultra matte to ultra glossy, and solid metal. The standard exterior options for the SM2 include five veneers and three unicolour coatings, offering extensive interior matching possibilities. Upgrade options include individual colours and piano finish, along with ceramic coated steel and solid metal choices. Further individualization without limitations are available through our Custom Craft service, from precious metals applications up to handmade mirrored veneers.



EXPERIENCE THE STEREOMASTER SM2

The musical performance of the Lyravox Stereomaster can hardly be described, it has to be experienced. Our exclusive dealers will be happy to demonstrate it to you in a private audition. Please visit our website at www.lyravox.de to locate a dealer near you or to learn more about the numerous innovations of the Stereomaster range. Or feel free to contact us directly.





STEREOMASTER SM2-200 mkII in STUDIO BLACK (MATTE)

FINISHES, COLOURS, MATERIALS

EXAMPLES:

SECTION	STANDARD	OPTION	CUSTOM CRAFT
Top/Bottom/ Front (Coating)	Interior White (Matte) Sand Beige (Matte) Studio Black (Matte)	Individual Matte Colour Individual Glossy Colour (Any RAL or NCS Colour) Black Piano Finish Makassar Front with Black Piano Finish	Individual Piano Finish Hand Gilding
(Veneer)		Individual Non-Exotic Veneer	Exotic/Rare Veneer Craft Veneer (Burlwood etc.) Intarsia Veneers
Speaker Grilles	Brushed Stainless Steel	PVD Coatings*: Graphite Grey Black 24ct Gold	Solid Metals ... and whatever is possible.

*Grilles only, horizontal belts remain polished steel



White Washed Oak - Graphite Steel



FineLine Black



Black Piano Finish - 24ct Gold Coating



Studio Black (Matte)



Oxblood (Glossy)



Stone Grey Oak - Black Steel



Tobacco Oak



Interior White (Matte) - Graphite Steel



Mid Grey (Matte)



Makassar Front with Black Piano Finish



STEREOMASTER SM2-200 mkl in BLACK / LIGHT MAKASSAR PIANO FINISH

SPECIFICATIONS OF THE STEREOMASTERS SM2- 200mkl & SM2-170mkl

DIMENSIONS & WEIGHT	COMPONENTS	SOURCES	AUDIO FORMATS
<p>SM2-200 mkl: 200 x 35 x 25 cm (W x H x D) Weight: 58kg</p> <p>Ideal up to 80m² room size</p>	<p>2 x Scan Speak® Beryllium Dome Tweeter 2 x Scan Speak® 18M 7" Mid Woofer (SM2-200)</p> <p>2 x 8" TIW 200 xs Ultra Long Stroke Subwoofer (SM2-200)</p>	<p>integrated: - CD - USB-Stick</p> <p>via LAN/WLAN (802.11b, g, n): - Music Server - NAS - PC - DLNA-Sources</p> <p>via Internet: - Internet-Radio - Premium Services: TIDAL®, Qobuz®</p> <p>via Bluetooth (A2DP, AptX®): - Smartphone, Tablet, PC etc.</p> <p>external via cable: - analog in - digital in (SPDIF coax)</p>	<ul style="list-style-type: none"> • MP3 up to 320 kBit/s, VBR/CBR • WAV, AIFF, PCM up to 192kHz/24Bit Int/32BitFloat • FLAC up to 192 kHz/24 Bit • Ogg Vorbis • WMA (standard only; no Pro or Lossless) • AAC/M4A, ALAC <p>Gapless Playback at WAV, AIFF, PCM, FLAC, MP3, ALAC, AAC (m4a)</p>
<p>SM2-170 mkl: 172 x 33 x 23 cm (W x H x D) Weight: 43kg</p> <p>Ideal up to 50m² room size</p>	<p>2 x Scan Speak 21W Carbon Fiber Mid Woofer (SM2-170)</p> <p>2 x 3,5" Aluminum Full Range Side Effect Driver (SM2-200) & 2x AMT Side Tweeters</p> <p>8 x 500w S-Pro2 Class D Amplification by Pascal®/Denmark (SM2-170: 6 x 500w)</p> <p>CD-Drive TEAC® CD-SN240 Native CD-Drive / Slot-In</p> <p>3-Core-/8-Channel High Resolution DSP</p>	<p>via Internet: - Internet-Radio - Premium Services: TIDAL®, Qobuz®</p> <p>via Bluetooth (A2DP, AptX®): - Smartphone, Tablet, PC etc.</p> <p>external via cable: - analog in - digital in (SPDIF coax)</p>	<ul style="list-style-type: none"> • MP3 up to 320 kBit/s, VBR/CBR • WAV, AIFF, PCM up to 192kHz/24Bit Int/32BitFloat • FLAC up to 192 kHz/24 Bit • Ogg Vorbis • WMA (standard only; no Pro or Lossless) • AAC/M4A, ALAC <p>Gapless Playback at WAV, AIFF, PCM, FLAC, MP3, ALAC, AAC (m4a)</p>



LYRAVOX
HAMBURG

Lyravox Geräte-manufaktur GmbH & Co. KG
Jaffestraße 6
21109 Hamburg, Germany

Phone +49 - 40 - 32089798 - 0
Fax +49 - 40 - 32089798 - 9

info@lyravox.de
www.lyravox.com

